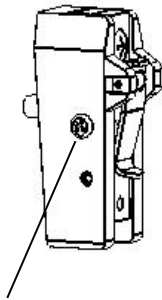


部品(新電極セット)をご購入お客様へ

この度、電極台の改良変更を実施いたしました。
電極の取り付け及びヒーターの固定方法は従来と、同じですが、
電極カバーの固定方法が旧タイプ電極と異なり、図中記載のように、
取り付け取り外しをお願いします。

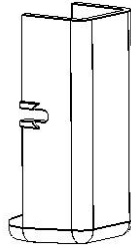
旧タイプ

電極台

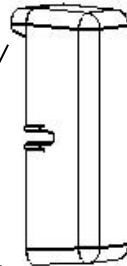


カバー固定ビス

電極カバー
上下加熱用



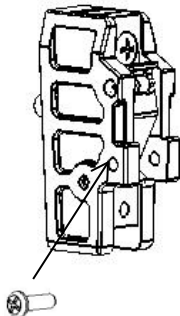
電極カバー
片側加熱用



※製品によっては、
突起が下部にある場合があります

新タイプ

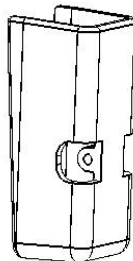
電極台



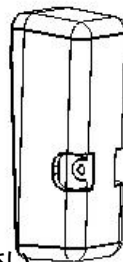
カバー固定ビス

※カバーを取り付けてからネジを挿入し固定して下さい。

電極カバー
上下加熱用



電極カバー
片側加熱用



To customers who have purchased Fuji Impulse's square type electrode

We would like to announce that we have upgraded the square type electrode and cover.

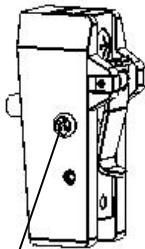
The old and new electrodes are interchangeable, and the installation method is the same.

Please note that only the installation method for the electrode cover is different.

The installation procedure for the new electrode cover is illustrated below.

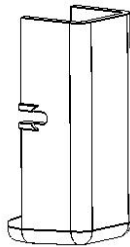
OLD TYPE

Square type electrode

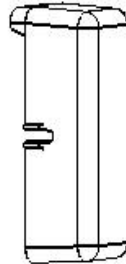


Cover fastening screw

Electrode cover
(For double-side heating type)



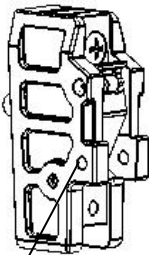
Electrode cover
(For single-side heating type)



**Depending on the machine model, the shape of the electrode cover may differ.*

NEW TYPE

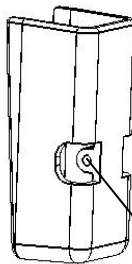
Square type electrode



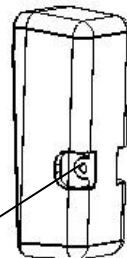
Cover fastening screw

** Please tighten the screws **after** mounting the electrode cover.*

Electrode cover
(For double-side heating type)



Electrode cover
(For single-side heating type)



Put the cover fastening screw into this hole to fix the cover.

※Please noted the new electrode cover can NOT be installed to the old type electrode.